

Climate Alliance

City networks and energy poverty

Today's Agenda

- **Introduction to Energy Poverty**
What is energy poverty?
- **Interactive session I**
Energy Poverty in your municipality – which challenges are you encountering?
- **Energy Poverty Advisory Hub**
What is the Energy Poverty Advisory Hub?
Presentation of activities and materials
- **Interactive session II**
Centralised vs decentralised approach
- **Debate**



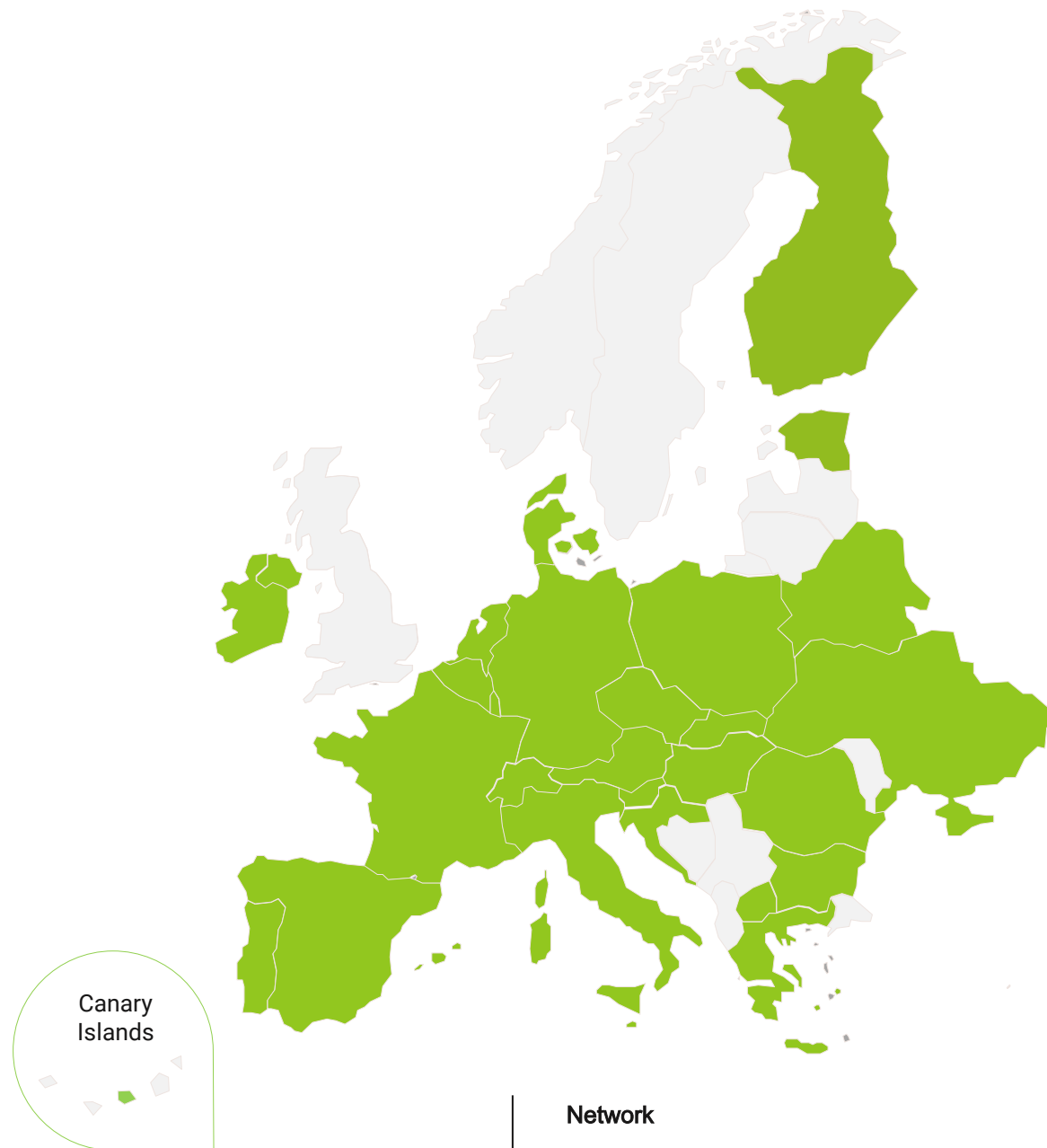
A strong alliance

Facts & figures

Almost 2,000 members

From more than 25 European countries

Corresponding to almost 90 million people
and thus about 22% of the EU population!





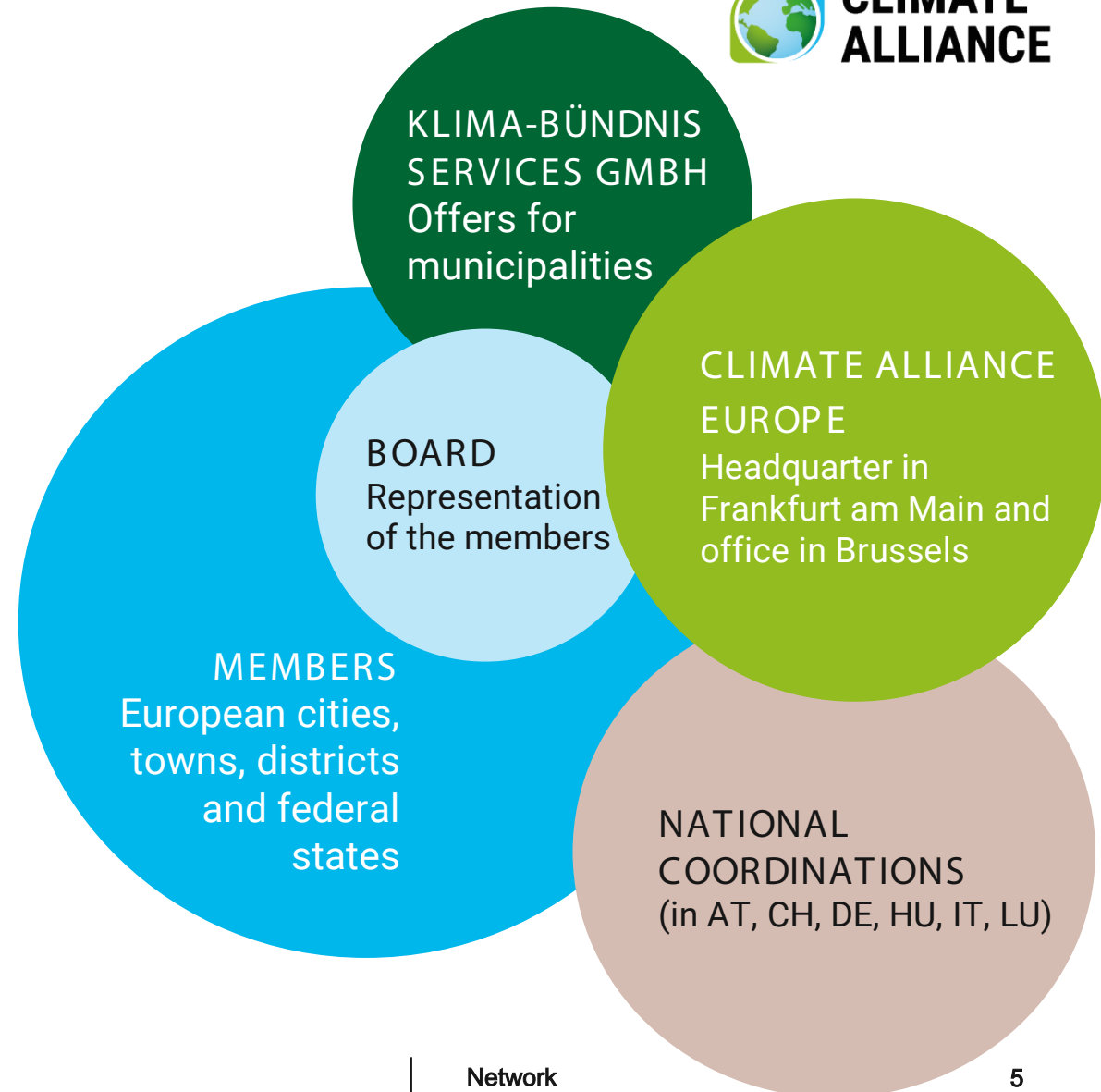
Together towards ambitious goals!

Climate Alliance municipalities have each passed a local resolution on membership in which they embrace the association's goals. These are:

- To strive for a 95% **reduction in greenhouse gas emissions** by 2050 compared to 1990 levels, in line with IPCC recommendations.
- To implement effective and **comprehensive climate action** in accordance with Climate Alliance principles.
- To promote **climate justice** together with indigenous peoples by supporting their rights, protecting biodiversity and abstaining from the use of unsustainably managed timber.

Structure of the network

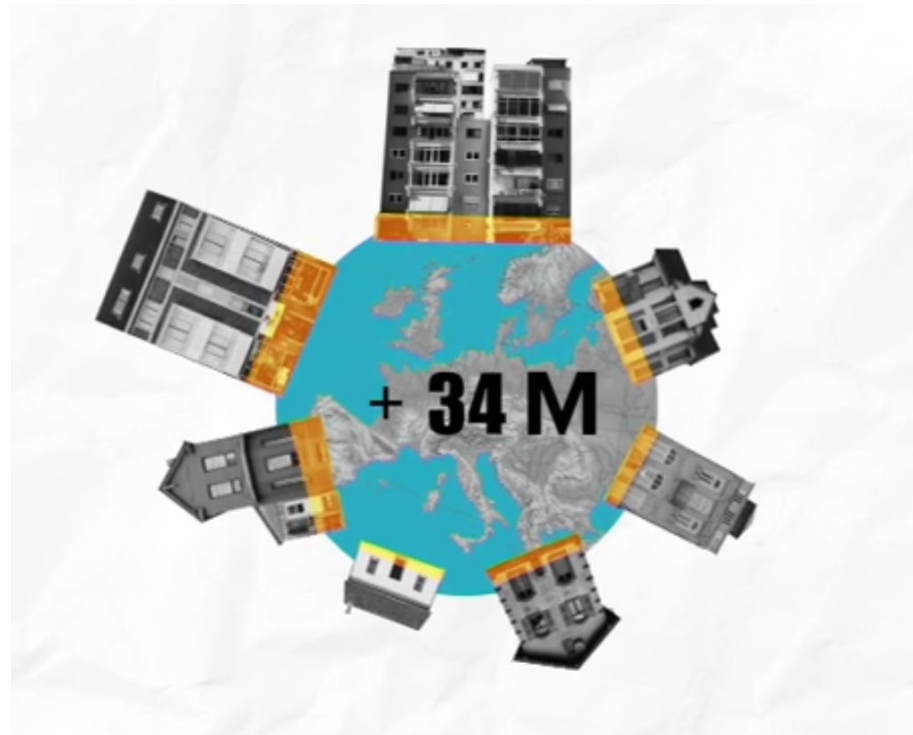
- The **executive board** is responsible for the strategic direction of the network. It is made up of and elected by Climate Alliance members.
- With its headquarters in Frankfurt and its Brussels office, **Climate Alliance Europe** manages the network at European level and carries out numerous activities.
- Six **national coordination offices** support members in their respective countries.



Energy poverty

According to the European Commission:

“energy poverty is a situation in which households are unable to access essential energy services.”

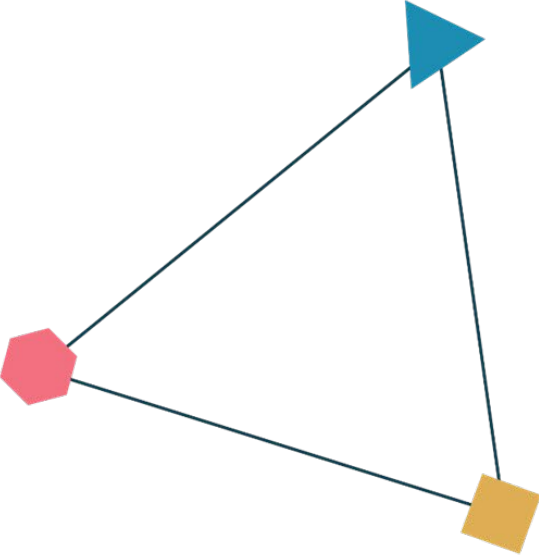


Energy poverty challenges

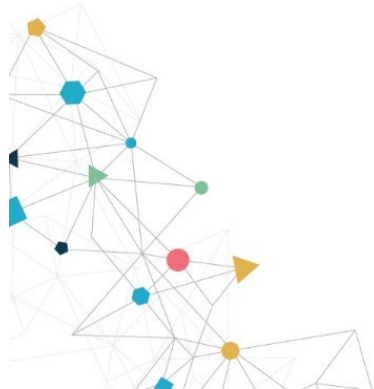


Energy efficiency

Low income



Energy prices



Energy poverty – A socio-technical challenge

Heating



Cooling



Vulnerable consumers



Wellbeing

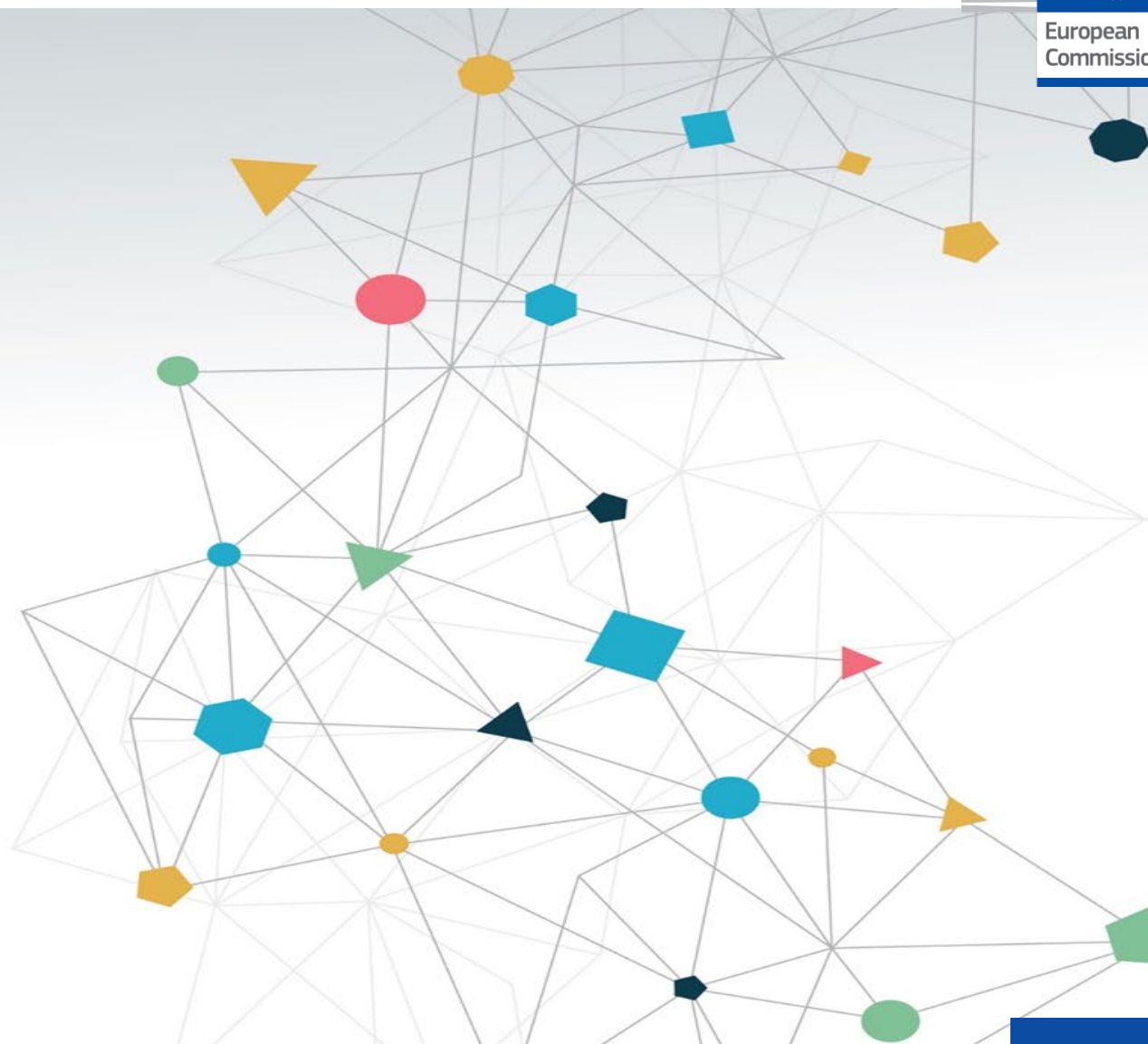
Social inclusion



Interactive Session I

- **Energy Poverty action in your municipality**
Describe measures taken in your municipality
(think about housing, transport, energy policies)
- **Challenges**
Which challenges did you encounter?
- **Collect measures and challenges on the whiteboard**





EU Energy Poverty Advisory Hub

In a nutshell

The leading EU initiative run by the European Commission at the request of the European Parliament, is a collaborative network of stakeholders aiming to eradicate energy poverty and accelerate the just energy transition of European local governments.

Mission To become the central platform of energy poverty expertise in Europe.

Partners



Climate Alliance

NOVA

NOVA SCHOOL OF
SCIENCE & TECHNOLOGY

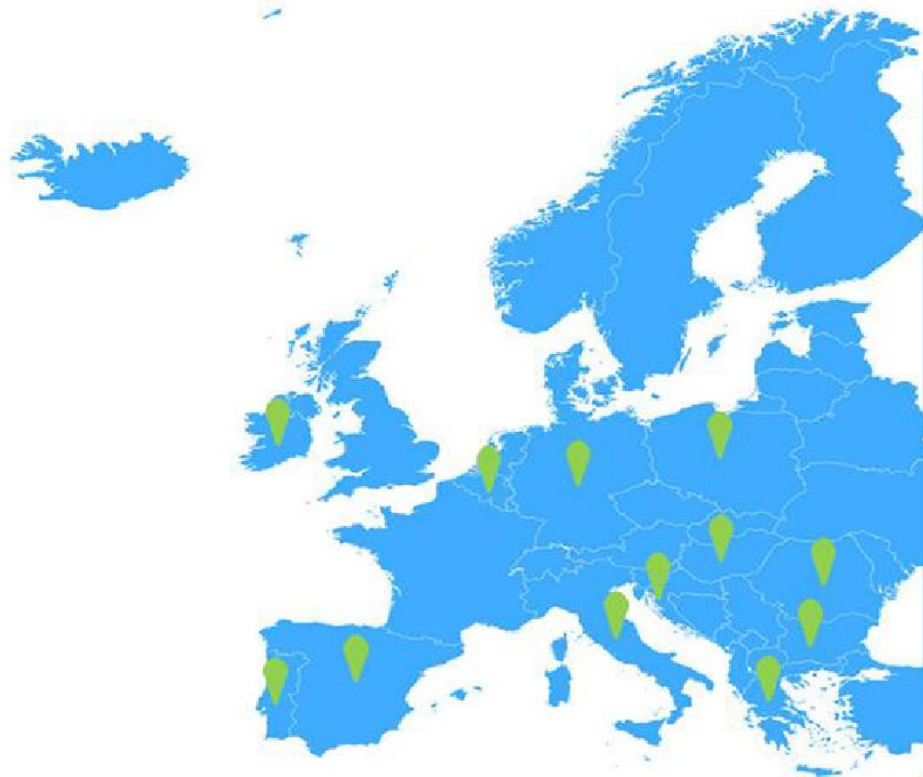
ecoserveis

akaryon^o

WEBTOOLS • UMWELT • FÖRDERUNGEN



Antennas



Croatia – DOOR

Ireland – South East Energy Agency

Cyprus – Cyprus Energy Agency

Poland – Polish Network of Energy Cities

Bulgaria – Sofia Energy Center

Hungary – CA Hungary

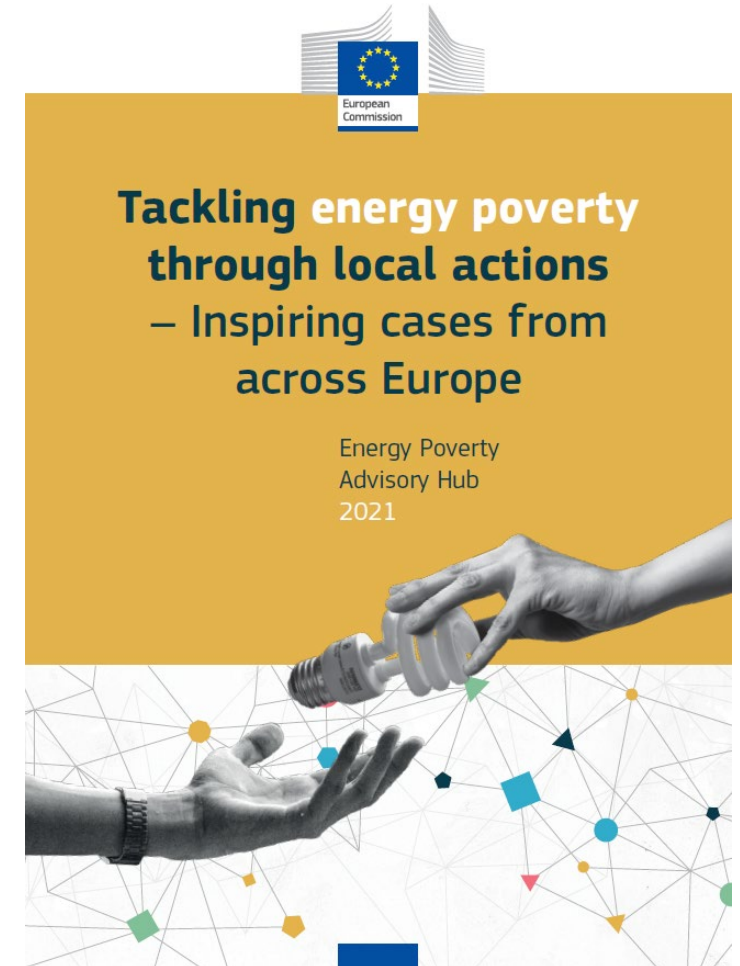
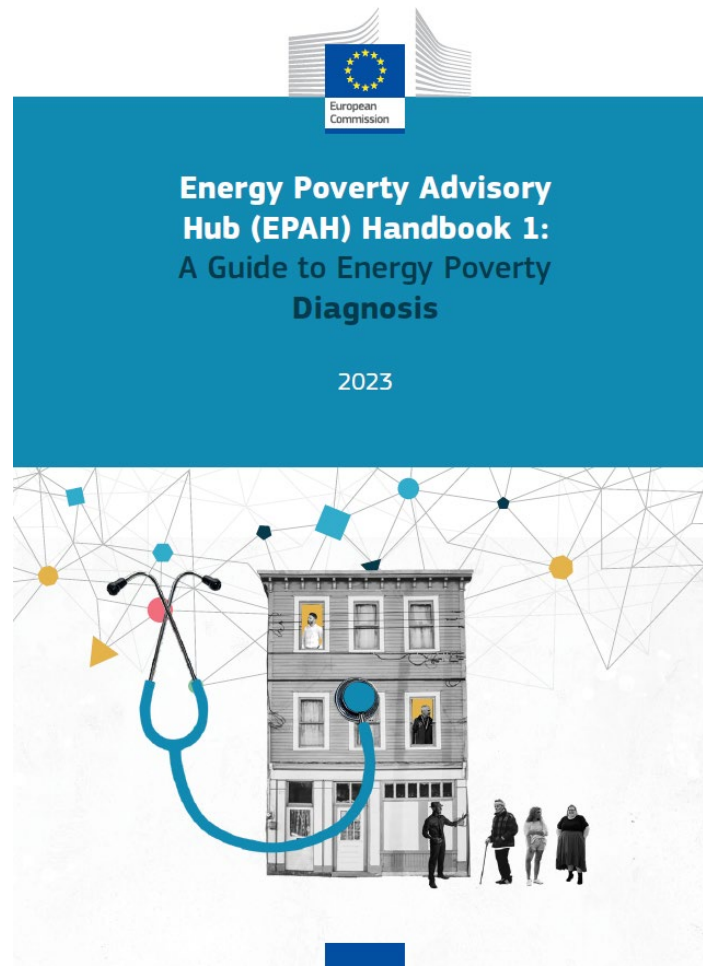
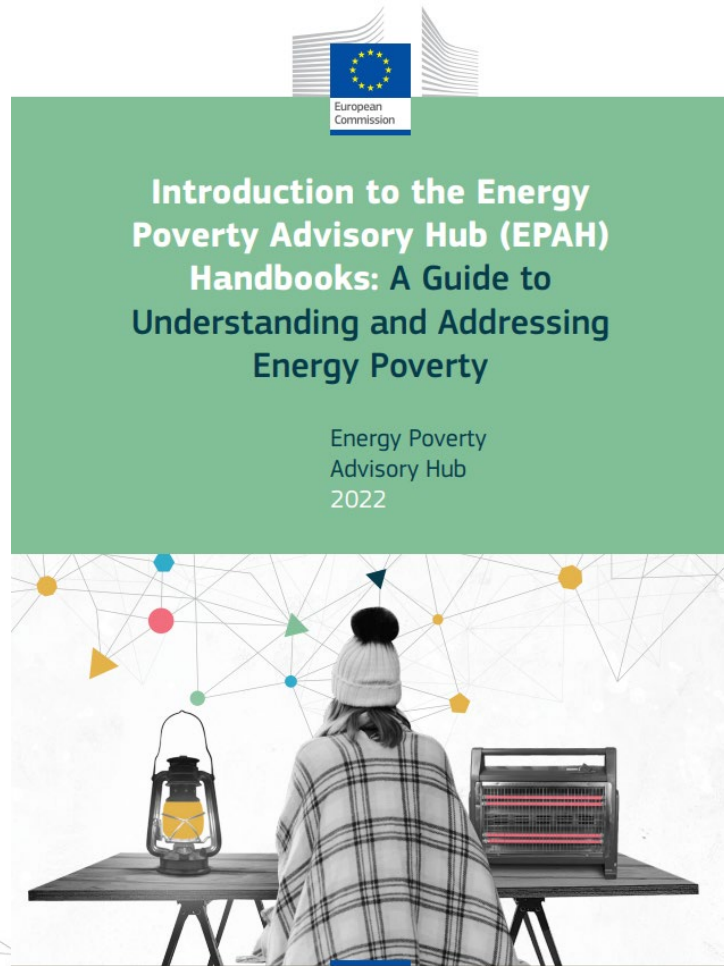
Greece - Anatoliki



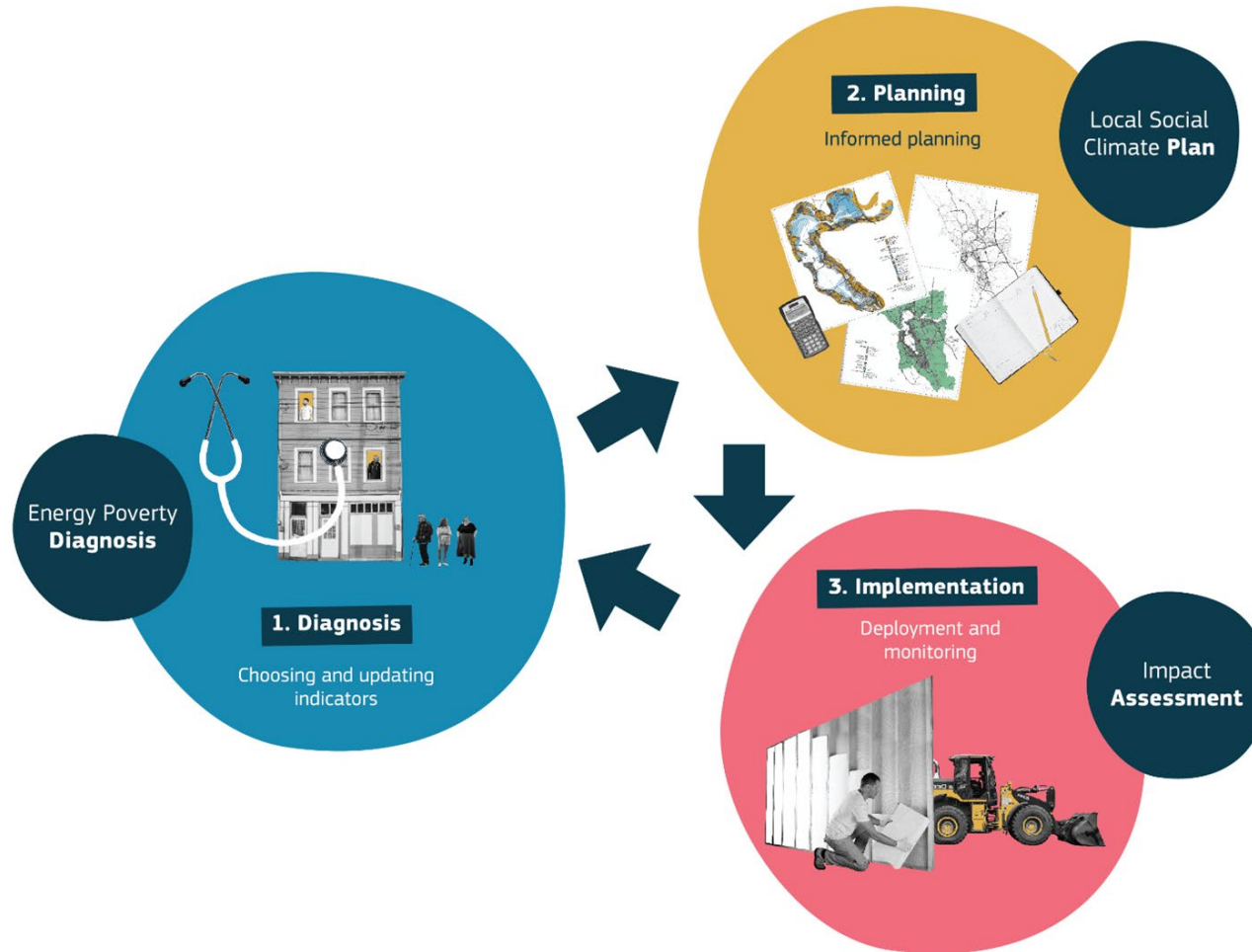
What do we offer for municipalities?



Learning material for practical guidance



The EPAH Handbooks trilogy

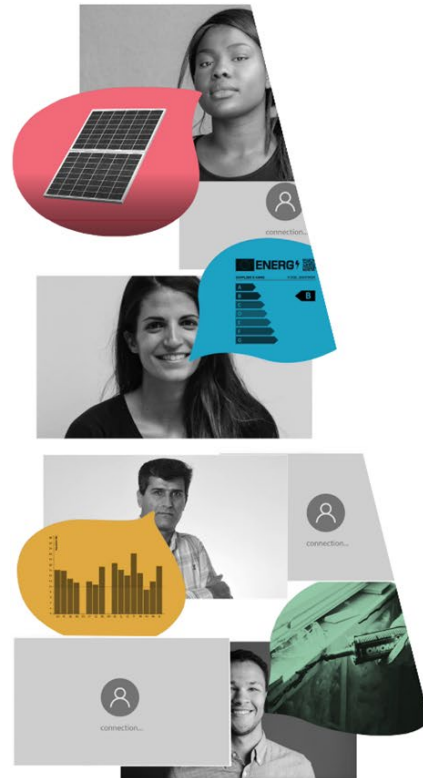


Link to the EPAH Handbooks and other publications

Online courses

- Self-paced
- Presentations from experts, interviews with practitioners, interactive activities
- Easy registration

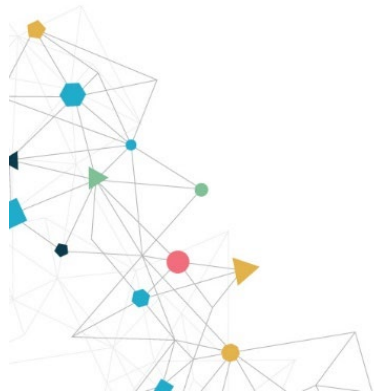
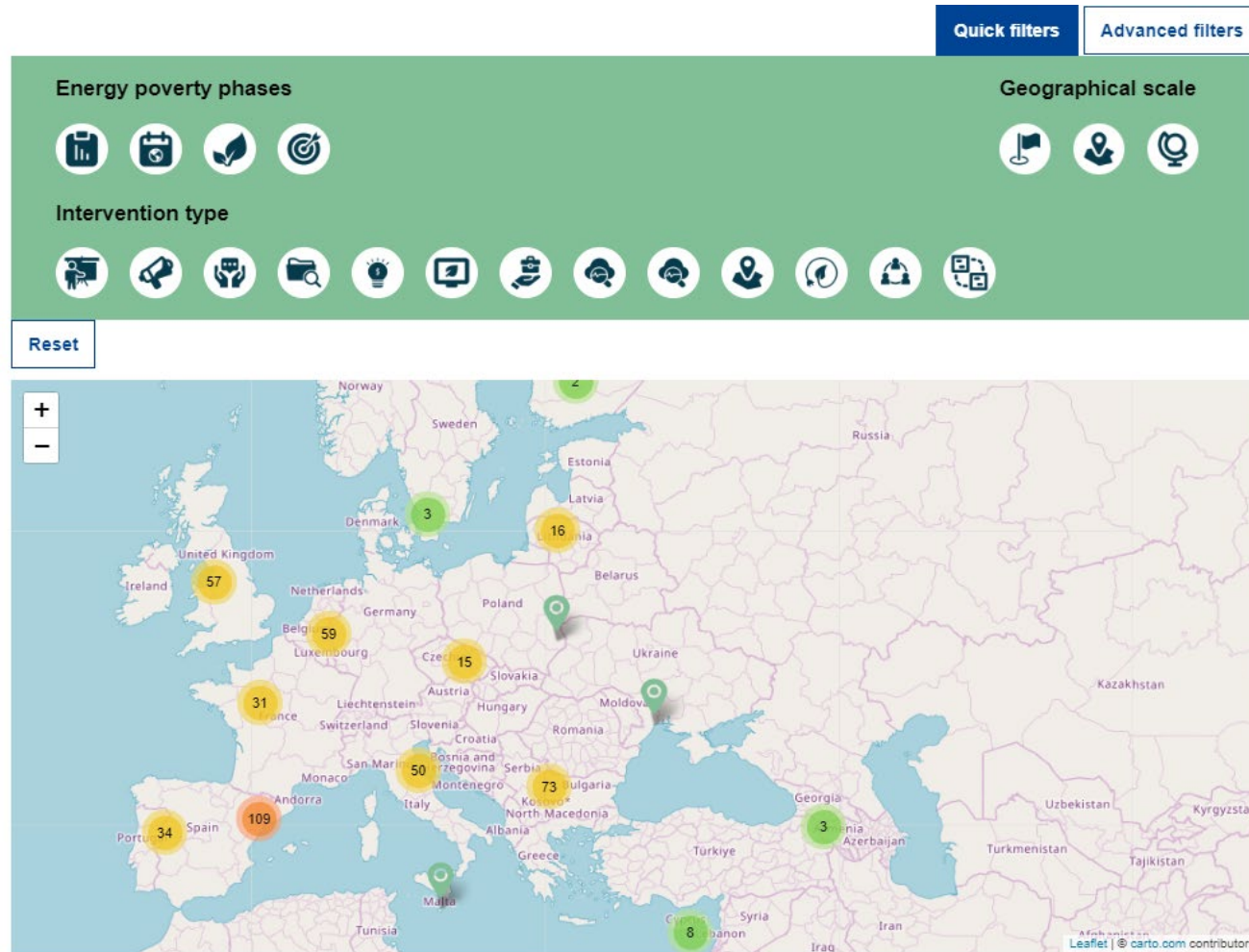
elearning.energypoverty.eu



NEW COURSE

**Energy poverty in Europe:
From policy framework
to integration in
local action plans**

Database of EP projects & initiatives – EPAH ATLAS



Measurement – The national indicators database

Browse data by indicator or by country

by indicator

by country

Browse data by indicator

Inability to keep home ade

Disaggregate data by

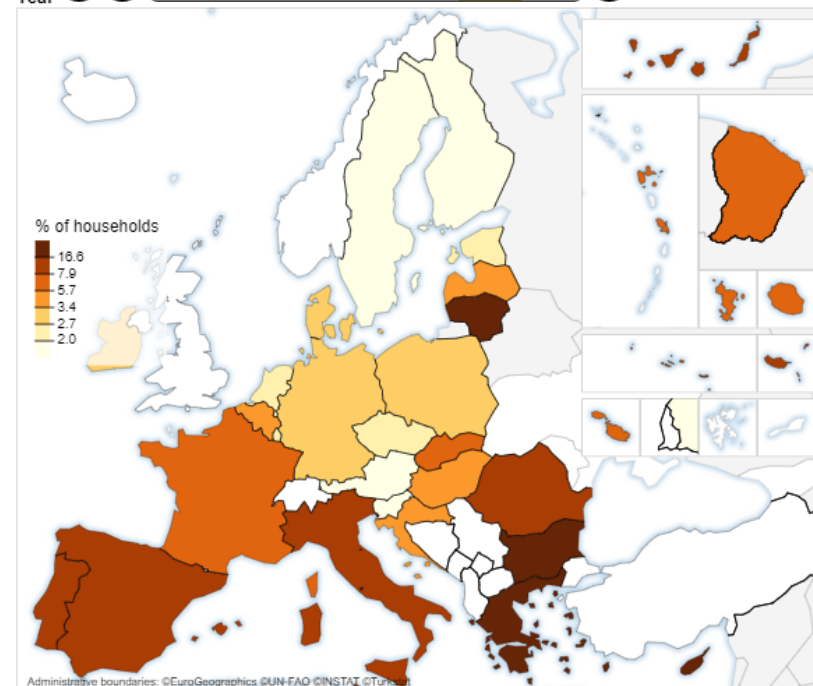
No disaggregation - Coun

Inability to keep home adequately warm

No disaggregation - Country average

The inability to keep home adequately warm indicator represents the share of (sub-) population /households not able to keep their home adequately warm, based on the question "Can your household afford to keep its home adequately warm?".

Year ▶◀ 2016 2017 2018 2019 2020 2021 2022 ▶▶



Unit % of households OR % of population

Source [EU-SILC](#) and [JRC](#)

Last update 2021

Download

Dataset: [CSV](#) / [EXCEL](#)

Map: [PNG](#)

Map, graph and info: [PDF](#)

Compare countries

Select an item

Bear in mind

This indicator refers to an individual's perception of 'adequately' which may differ from one country to another or between age-groups, etc. The indicator only refers to the warmth and does not cover summer energy poverty. The indicator does not provide information on the causes for the inability; hence it should be analyzed together with other indicators, such as energy expenditures, for identifying potential causes. [Learn more](#)

Network – Events at all levels

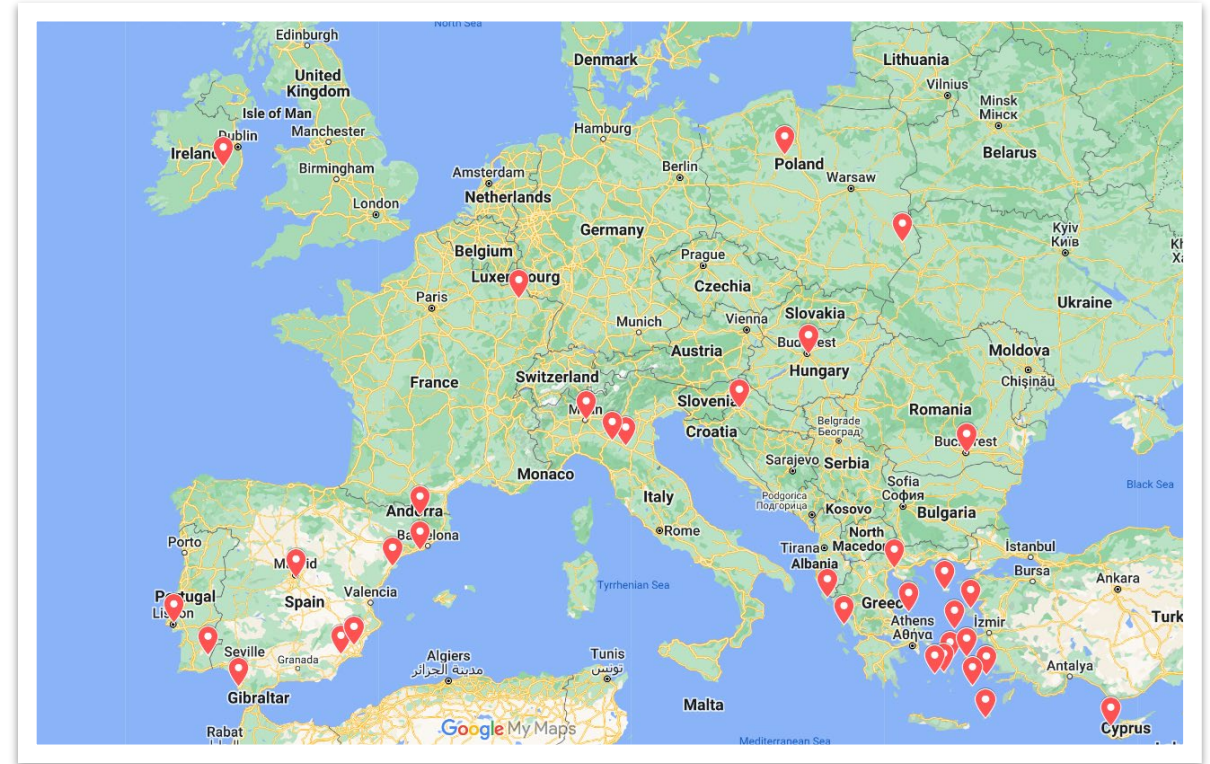
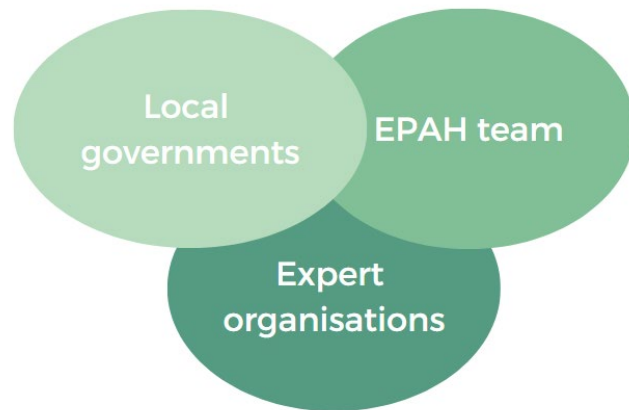
- International conference – onsite
- Lunch talks – online
- National events
- Webinars



Direct support - OPEN CALLS for technical assistance

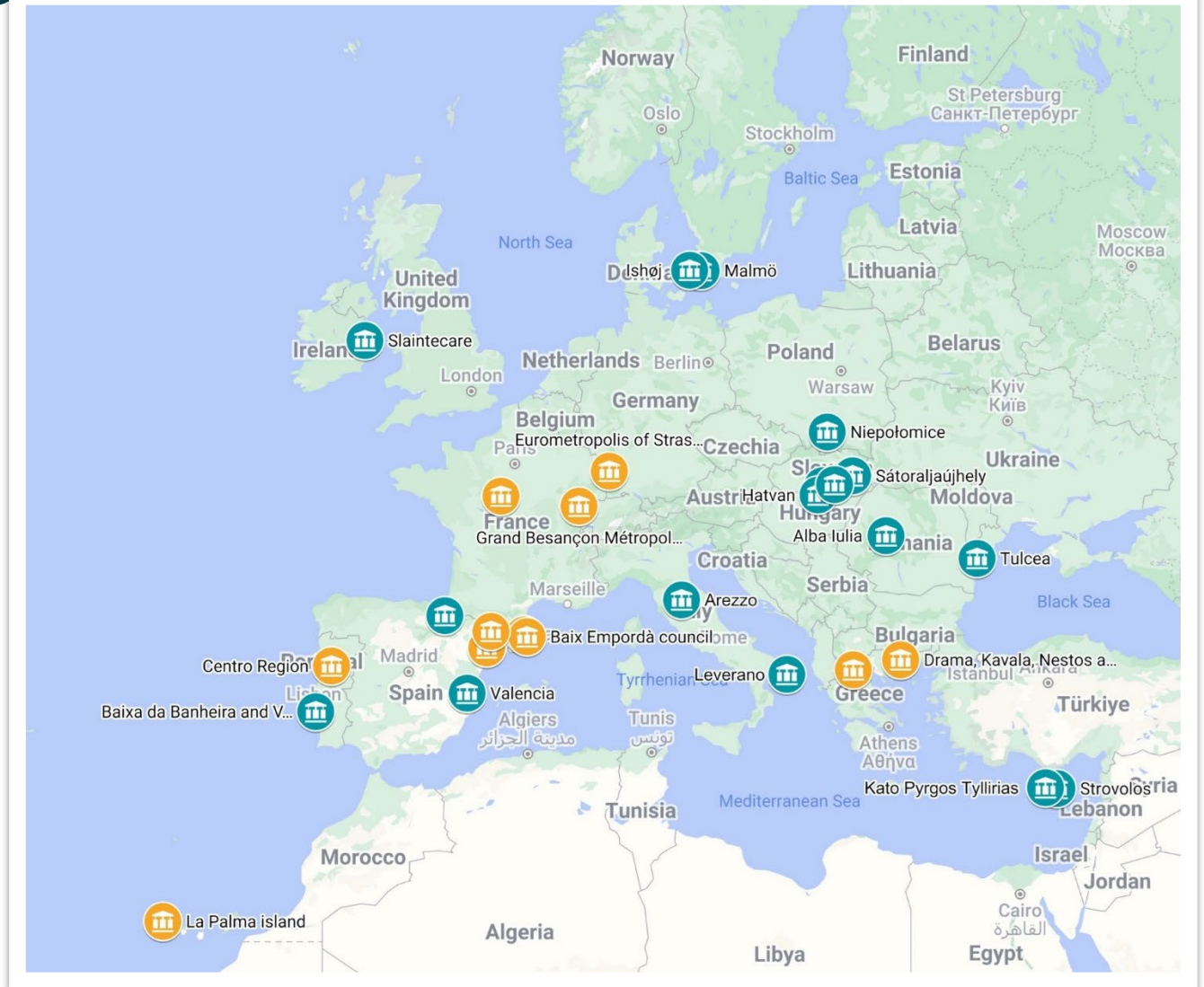
1st call results

- 23 projects awarded
- 34 municipalities assisted
- Up to 9 months of tailored



2nd call – RESULTS

- **28** projects awarded
- from **12** countries
- **24** municipalities & **10** supramunicipalities/regional authorities representing 334 municipalities are assisted.
- With up to 9 months of tailored support.



Some concrete lessons learned from the technical assistance



The power of the tailored support - All local contexts differ.

Exchange with the municipality to understand the actual needs.

Collaboration among municipal departments and external organisations for the success of the action planned.

External organisations can help the municipality to initiate actions on energy poverty – therefore in the 2nd call other organisations other than municipalities can apply.

Foresee internal and external resources – mapping exercise

Interactive Session II

- **Groups 1 & 2: decentralised approach**
discuss and advocate for a decentralised approach, focused on a multi-level governance structure where local regions and national bodies
- **Groups 3 & 4: centralised approach**
discuss and advocate for a centralised approach, focused on strong national policies and interventions



CONTACT

Want to know more?
Get in touch with us!

Climate Alliance
E. europa@climatealliance.org



Energy Poverty Advisory Hub
E. info@energypoverty.eu

